

# MINERALS

DEN UNDERBARA OCH UNIKA DESIGNEN AV KALK  
*THE ESSENTIAL DESIGN OF LIME SURFACES*



 **LOGGIA**<sup>®</sup>

# MINERALS

## DEN UNDERBARA OCH UNIKA DESIGNEN AV KALK THE ESSENTIAL DESIGN OF LIME SURFACES

**SE Kalk serien | Minerals** innehåller produkter baserade av kalk-material för väggytor, skönheten med dessa produkter ligger i det autentiska och den mångsidiga design. Ytorna visar storheten av konstnärligt hantverk genom sin känsla, även känslan av estetisk skönhet.

Kalk ytor för hem dekor erbjuder en kombination av naturlig skönhet, hållbarhet och funktionalitet. Oavsett om det är för att skapa eleganta utrymmen med minimal design eller konstnärliga ytor genom att leka med olika produkter och tekniker, den dekorativa möjligheten är nästintill oändlig och låter dig att sätta din personliga touch i utrymmena på ett unikt och nyskapande sätt.

**EN The Lime line | Minerals** includes the range of lime-based material wall coverings, the beauty of these products lies in their authenticity and the versatility of their design. The surfaces show the features of artistic workmanship to the touch, adding a sensorial element to the aesthetic beauty.

Lime finishes for home decor offer a combination of natural beauty, sustainability and functionality. Whether it is creating elegant environments with a minimal design or artistic spaces by playing with finishes and three-dimensionality, the decorative possibilities are practically infinite and allow you to personalize the interiors in a unique and refined way.



**NATURLIG  
PRODUKT**  
NATURAL PRODUCT



**MÅNGSIDIG  
DESIGN**  
VERSATILE DESIGN



**APPLICERAS MED  
SPACKELVERKTYG**  
TROWEL



**INOMHUS  
UTOMHUS**  
INDOOR-OUTDOOR



**HÖG  
ARBETARVÄN  
LIGHET**  
HIGH WORKABILITY



**FÄRG KATALOG**  
COLOR CHART



## INFINITO

Styrkan av material som skapar oändliga textur kombinationer för att förvandla ytorna.

*The strength of matter that creates infinite texture combinations to transform the surfaces.*

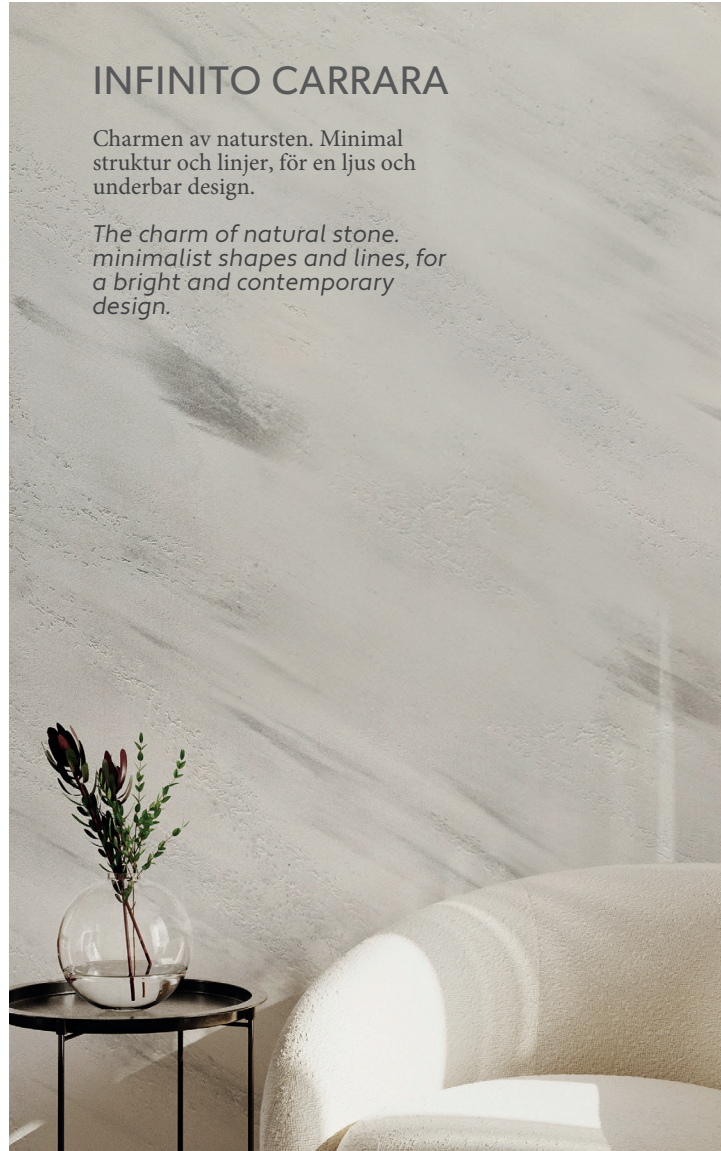


Cod. A252C43, A252C44

## INFINITO CARRARA

Charmen av natursten. Minimal struktur och linjer, för en ljus och underbar design.

*The charm of natural stone. minimalist shapes and lines, for a bright and contemporary design.*



Cod. A552C42, A552C45

## VOLARE

Härlig och sofistikerad, en len känsla med en matt yta, för kompakt och tidlös design.

*Essential and sophisticated, a soft touch effect with a more matt finish, for a compact and timeless design.*



Cod. A331C25

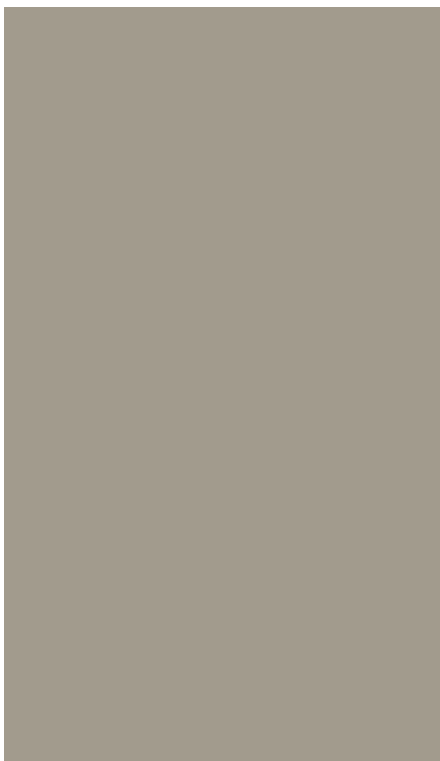
# INFINITO CARRARA

**Infinito Carrara®** är en spacklad material beläggning med både blank och matt yta, som låter dig skapa underbar ljus design full av skiftningar.

**Infinito Carrara®** it is a troweled material covering with both a glossy and matt finish that allows you to create a contemporary, bright design full of shades.

**Produkt användningsområde:** Inomhus, torra och våta utrymmen..

**Its use is indicated for:** Internal and external coverings | Bathroom coverings.



Infinito Carrara: cod. A552C32

Den inspirerade designen av äkta sten enda in i ådrarna.

*The inspired design to the veins of natural stones.*



Infinito Carrara: cod. A552C02, A552C31, A552C37





Visar produkten: Infinito Carrara  
Colori: cod. A552C45



Visar produkten: Infinito Carrara effetto pietra naturale  
Colori: cod. A552C26, A552C28, A552C33



Visar produkten: Infinito Carrara  
Colori: cod. A552C38, A552C02



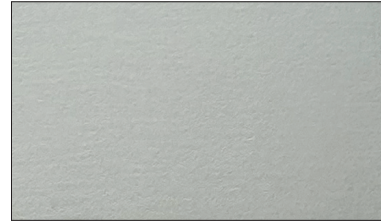
\*\*\*\*C01



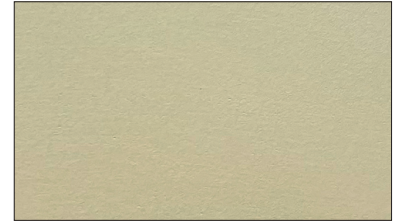
\*\*\*\*C02



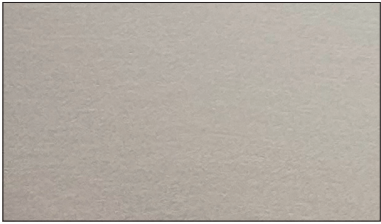
\*\*\*\*C03



\*\*\*\*C04



\*\*\*\*C05



\*\*\*\*C06



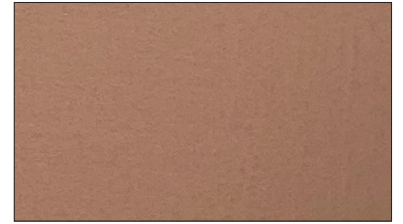
\*\*\*\*C07



\*\*\*\*C08



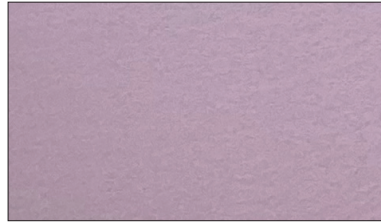
\*\*\*\*C09



\*\*\*\*C10



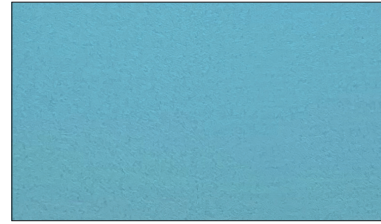
\*\*\*\*C11



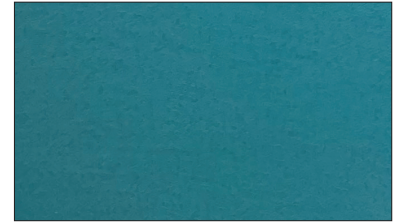
\*\*\*\*C12



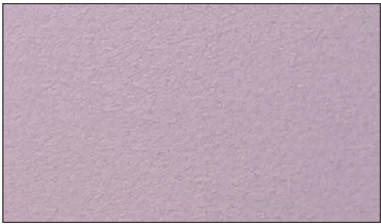
\*\*\*\*C13



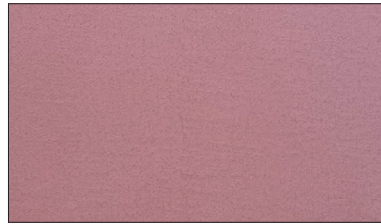
\*\*\*\*C14



\*\*\*\*C15



\*\*\*\*C16



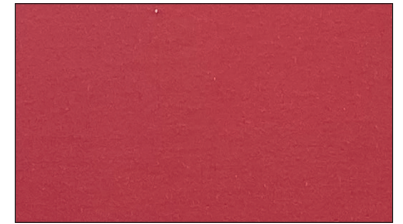
\*\*\*\*C17



\*\*\*\*C18



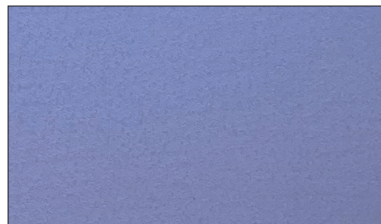
\*\*\*\*C19



\*\*\*\*C20



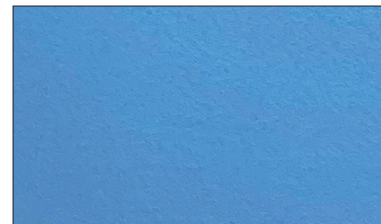
\*\*\*\*C21



\*\*\*\*C22



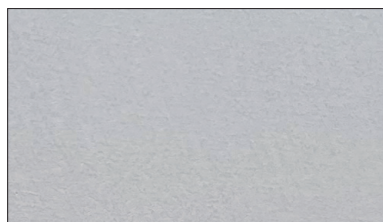
\*\*\*\*C23



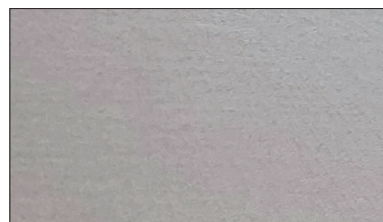
\*\*\*\*C24



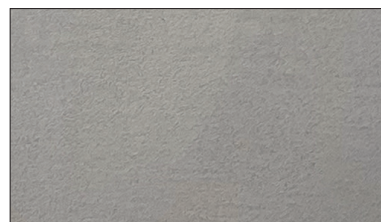
\*\*\*\*C25



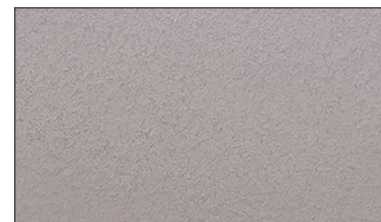
\*\*\*\*C26



\*\*\*\*C27



\*\*\*\*C28



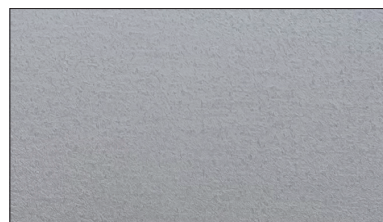
\*\*\*\*C29



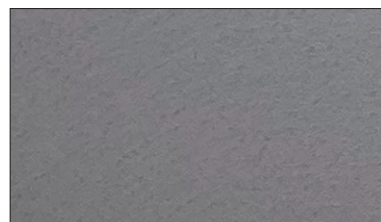
\*\*\*\*C30



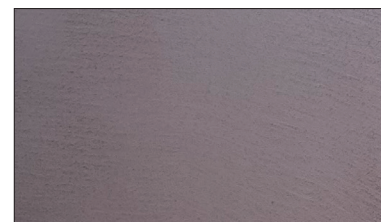
\*\*\*\*C31



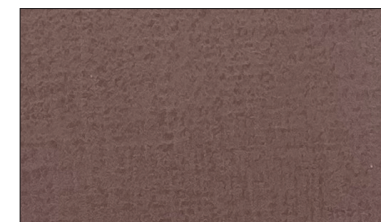
\*\*\*\*C32



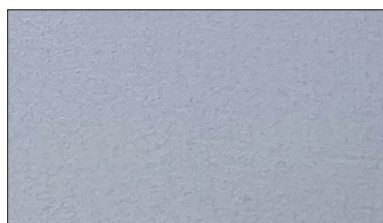
\*\*\*\*C33



\*\*\*\*C34



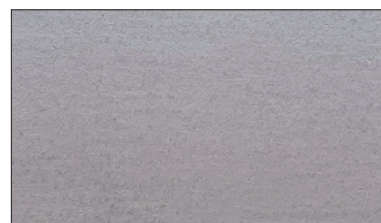
\*\*\*\*C35



\*\*\*\*C36



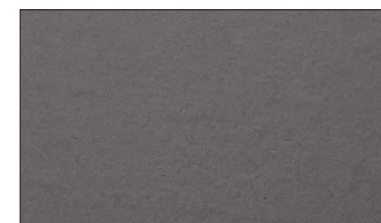
\*\*\*\*C37



\*\*\*\*C38



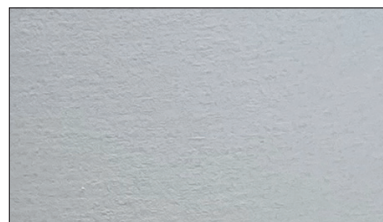
\*\*\*\*C39



\*\*\*\*C40



\*\*\*\*C41



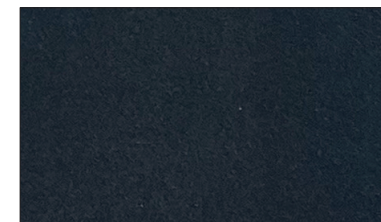
\*\*\*\*C42



\*\*\*\*C43



\*\*\*\*C44



\*\*\*\*C45

Gli asterischi presenti nel codice colore, corrispondono al numero identificativo del prodotto (\*\*\*\*). Scegliere il prefisso corrispondente al prodotto che si desidera colorare.

The asterisks in the color code correspond to the product identification number (\*\*\*\*). Choose the prefix corresponding to the product you want to colour. | **A252 INFINITO - A552 INFINITO CARRARA - A331 VOLARE** |

Per proteggere le superfici senza modificare la naturalezza del colore e dell'effetto visivo, applicare **VOLARE ANTIACQUA** o **RAIN PROTEX** (applicazione necessaria per le superfici esterne), **CERA RIFLESSO** (per Infinito Carrara).  
To protect surfaces without changing the naturalness of the color and visual effect, apply **VOLARE ANTIACQUA** or **RAIN PROTEX** (application necessary for external surfaces), **CERA RIFLESSO** (for Infinito Carrara).

Per proteggere le superfici all'interno delle docce, applicare una mano di **Fissacril**, successivamente **Microvetro BI** | To protect the surfaces inside the showers, apply one coat of **Fissacril**, then apply **Microvetro BI**.

Cartella colori valida per il rivestimento **PELLE DI LUNA** | Color chart valid for the covering **PELLE DI LUNA**.

**Per ulteriori informazioni tecniche sul ciclo applicativo dei singoli prodotti è necessario consultare la scheda tecnica di riferimento scaricabile sul sito [www.loggia.it](http://www.loggia.it)**

**For further technical information on the application system of the individual products it is necessary to consult the reference technical data sheet which can be downloaded from the website [www.loggia.it](http://www.loggia.it)**



LOGGIA SCANDINAVIA AB  
Höjdnätsvägen 5, 724 55 Västerås, SWEDEN.  
Info@loggiascandinavia.se | www.loggiascandinavia.se

